



## LiveSTATS.XSP v8: Quick Start Guide

Welcome to LiveSTATS.XSP—the premium high delivery bulk statistics solution for the ISP and MSP community. This guide steps you briefly through LiveSTATS.XSP configuration to quickly get you to the point where you can view reports for a web site. User guides on the Global Administration, Control Panel, and Reporting interfaces are also provided in PDF. For complete documentation on LiveSTATS.XSP, including FAQs, technical articles and user guides for the custom utilities, please visit the DeepMetrix Customer Care site at <https://www.deepmetrix.com/customer-care>.

The contents of this guide are:

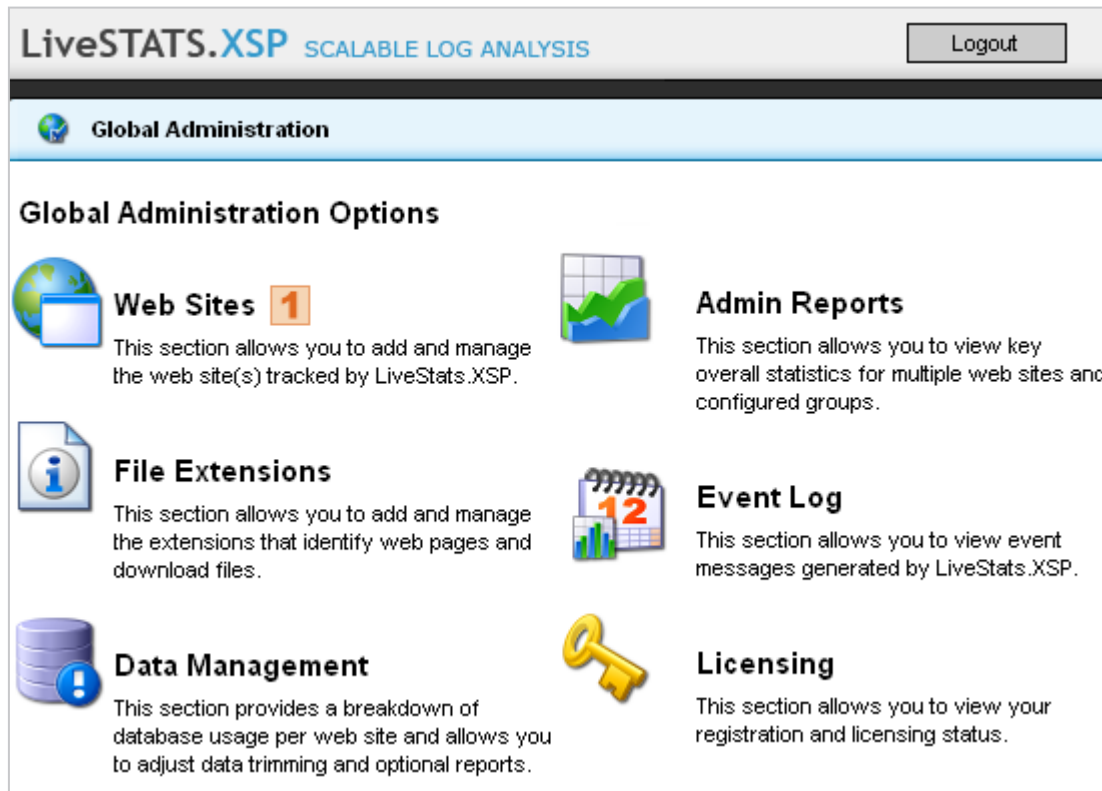
<b>What this Document Covers .....</b>	<b>page 2</b>
<b>Accessing the Global Administration Interface .....</b>	<b>page 4</b>
<b>Adding a New Web Site .....</b>	<b>page 5</b>
<b>Accessing the Control Panel Interface .....</b>	<b>page 17</b>
<b>Verifying that LiveSTATS.XSP is Processing Statistics .....</b>	<b>page 18</b>
<b>Adding a New User Account .....</b>	<b>page 19</b>
<b>Accessing the Reporting Interface .....</b>	<b>page 22</b>
<b>What's Next? .....</b>	<b>page 25</b>

Please note that this PDF was created to provide LiveSTATS.XSP customers with a printable version of the user guide. If you prefer to read this document on-screen through Adobe® Reader®, you may wish to increase the magnification.

## What this Document Covers

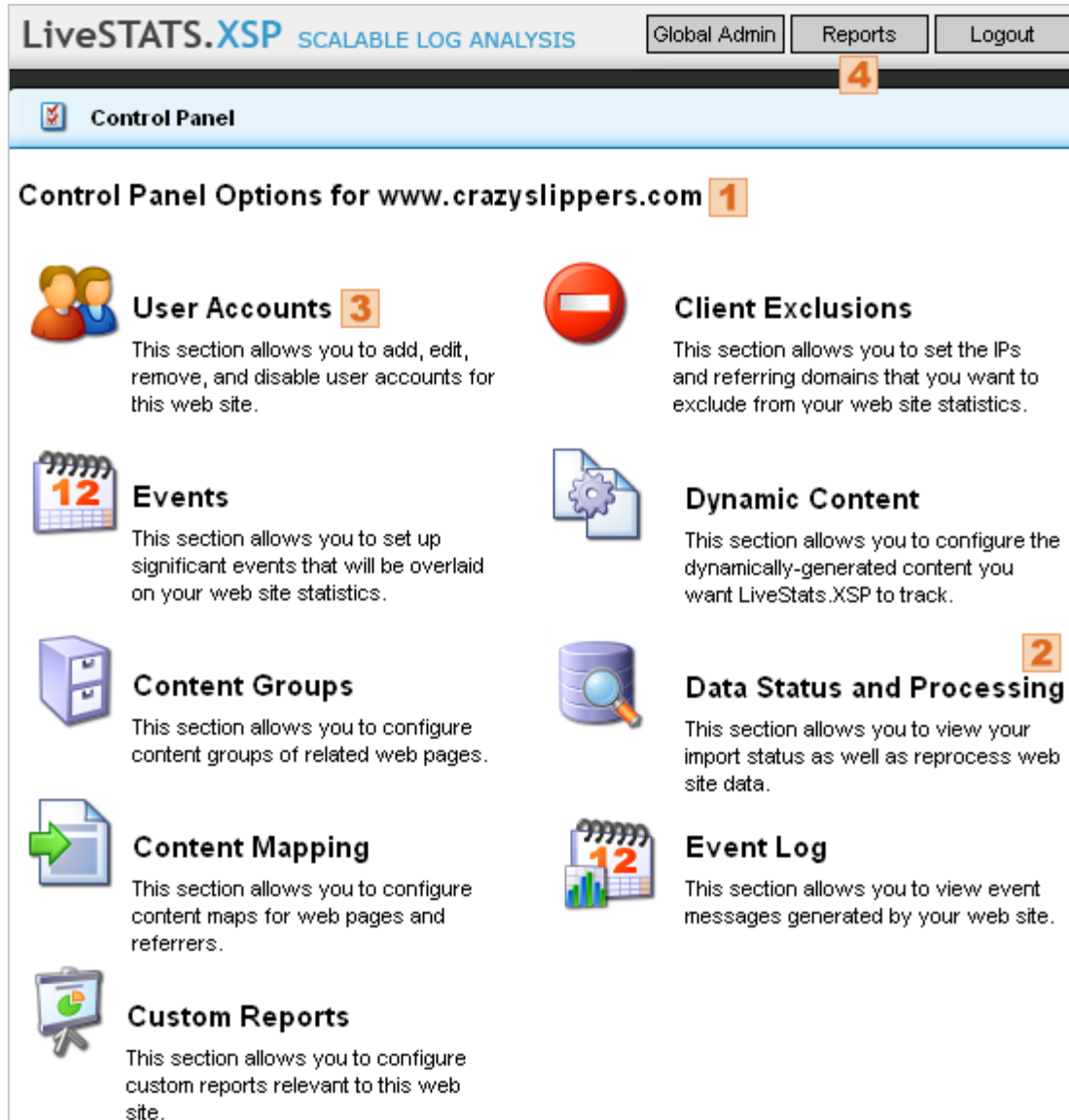
The Quick Start guide is intended to step you briefly through LiveSTATS.XSP configuration and quickly get you to the point where you can view reports for a web site.

This guide serves as an introduction to both the Global Administration Interface (Figure 1) and the Control Panel Interface (Figure 2).



**Figure 1:** The LiveSTATS.XSP **Global Administration** Interface.

Through the **Global Administration Interface**, you will add a web site to be tracked by LiveSTATS.XSP.



**Figure 2:** The LiveSTATS.XSP **Control Panel** for a web site.

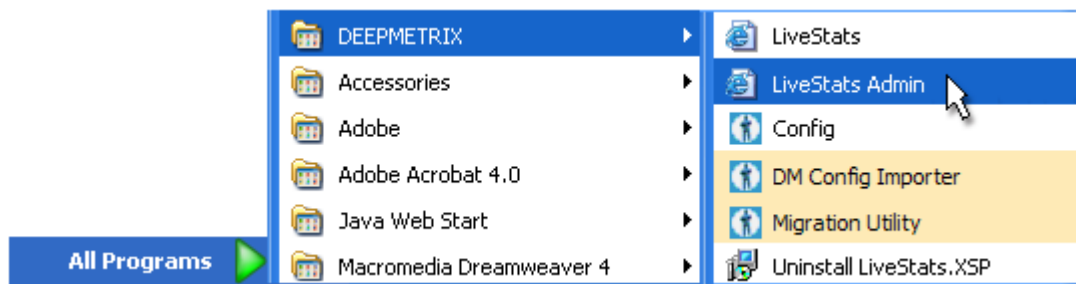
Through the **Control Panel Interface**, you will verify that LiveSTATS.XSP is processing statistics for a web site and create an account so other users can log in to the Reporting Interface.

## Accessing the Global Administration Interface

The Global Administration Interface is accessed through a web browser, making it easy for you to configure settings for LiveSTATS.XSP from the host computer (the computer on which LiveSTATS.XSP is installed) or virtually any computer with a browser on your network.

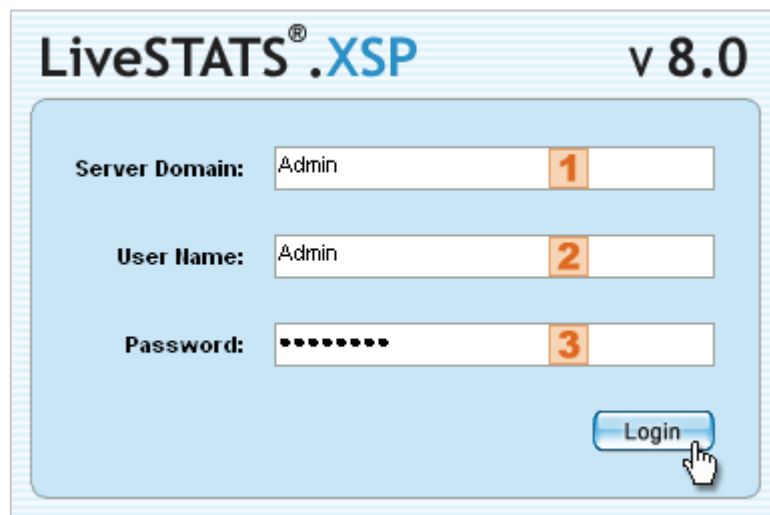
### Accessing the Global Administration Interface from the Host Computer

1. From the Start menu, click **Start>Programs>DeepMetrix>LiveStats Admin** (Figure 3).



**Figure 3:** Launching the Global Administration Login dialog.

2. The Login dialog will open (Figure 4). The Login fields are explained in the table below.



**Figure 4:** The Global Administration Login dialog.

Global Administration Login Dialog Fields (Figure 4)	
Server Domain <b>1</b>	<p><b>Admin.</b></p> <p>This field will be filled in by default when the Login Dialog is launched on the host computer.</p>
User Name <b>2</b>	<p>The LiveSTATS.XSP Master Account User Name you assigned during installation.</p> <p>Please note that the User Name is case-sensitive.</p> <p>This field will be filled in by default when the Login dialog is launched on the host computer.</p>
Password <b>3</b>	<p>Type the password you assigned the LiveSTATS.XSP Master Account during installation.</p> <p>Please note that the Password is case-sensitive.</p>

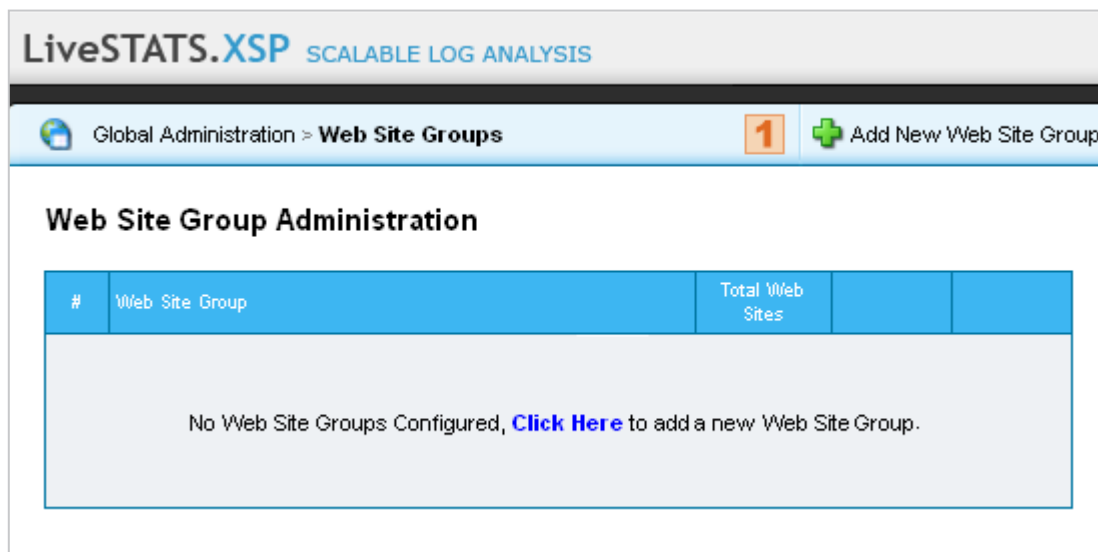
3. Click the **Login** button. The **Global Administration Options** page will open (Figure 1).



For information on accessing LiveSTATS.XSP from a remote computer, see the **Accessing the Reporting Interface** section.

## Adding a New Web Site

The Web Site Groups page (Figure 5) lists all configured groups of web sites. To access this page, click **Web Sites** on the Global Administration Options page (**1** in Figure 1).



LiveSTATS.XSP SCALABLE LOG ANALYSIS

Global Administration > **Web Site Groups** **1** + Add New Web Site Group

### Web Site Group Administration

#	Web Site Group	Total Web Sites
No Web Site Groups Configured, <a href="#">Click Here</a> to add a new Web Site Group.		

**Figure 5:** The **Web Site Groups** page.

## Web Site Groups

All web sites must belong to a web site group. These groups help you organize web sites and locate particular web sites quickly.

### Creating a New Web Site Group

1. Click **Add New Web Site Group** (1 in Figure 5) on the Web Site Groups page.
2. On the **Adding New Web Site Group** dialog (Figure 6), type a name for the group that describes the web sites it will contain.

**Figure 6** The **Adding New Web Site Group** dialog.

3. Click **Save**. The new group will now be listed on the Web Site Groups page (Figure 7).

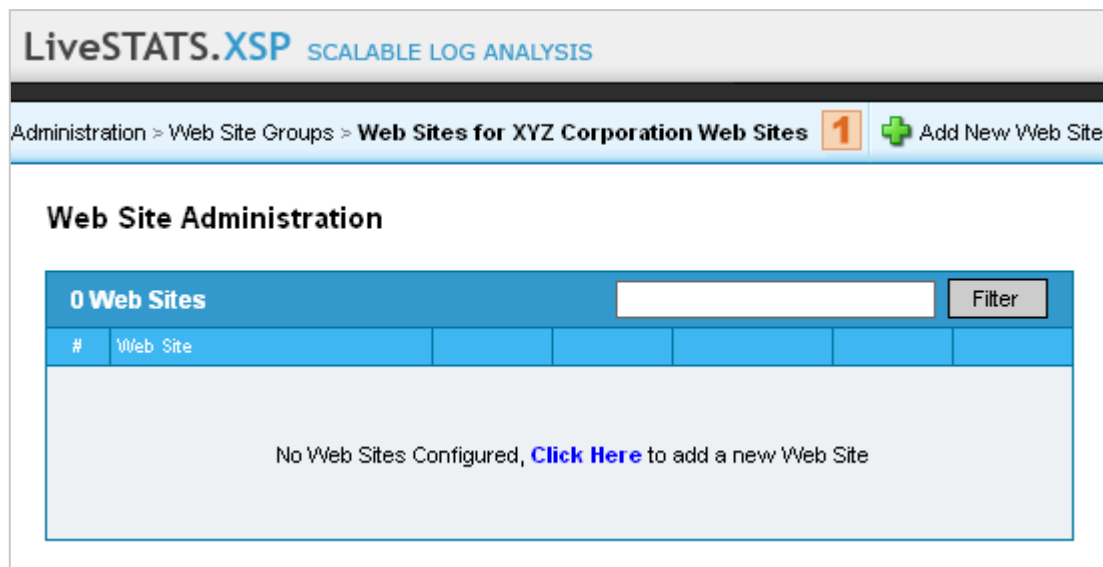
#	Web Site Group	Total Web Sites	Settings	Web Sites
1.	XYZ Corporation Web Sites	0	Settings	Web Sites

**Figure 7:** The Web Site Groups page.

## Web Sites

Click **Web Sites** (1 in Figure 7) to the right of the new group name on the Web Site Groups page.

The **Web Sites** page (Figure 8) will list all web sites that belong to a selected group.



**Figure 8:** The **Web Sites** page.


## Creating a New Web Site

1. On the Web Sites page, click **Add New Web Site** (1 in Figure 8).
2. Complete Step 1 of the **Adding New Web Site** wizard (Figure 9). The fields are explained in the table below.

**LiveSTATS.XSP** SCALABLE LOG ANALYSIS

---

Global Administration > Web Site Groups > Web Sites for XYZ Corporation Web Sites > **Adding New Web Site**



### Step 1. General Information.

Enter basic information about the web site such as the domain, default page, time zone, etc.

Web Site Domain:  **1**

Web Site Group:  **2**

Web Site Default Page:  **3**







Web Site Time Zone:  **4**

**5**  Automatically adjust for Daylight Savings?

**6**  Allow for Guest Login?

**Figure 9:** Step 1 of the **Adding New Web Site** dialog.


Adding New Web Site Step 1: General Information - Figure 9	
Web Site Domain <b>1</b>	Type the URL of the web site you want to track. e.g. www.crazyslippers.com
Web Site Group <b>2</b>	From the drop-down list, select the Web Site Group that you would like the Web Site to belong to.
Web Site Default Page <b>3</b>	Type the default page for your web site. e.g. index.asp

<p><b>Web Site Time Zone</b> </p>	<p>From the drop-down list, select the Time Zone for your web site. This is used to offset the dates correctly for the statistics.</p> <p>By default, this field is set to the host computer's time zone setting.</p> <p> It is recommended that the time zone setting not be changed after the initial web site configuration. If the time zone must be modified, you will need to reprocess the web site data to maintain accuracy.</p>
<p><b>Automatically adjust for Daylight Savings</b> </p>	<p>Select this option if you use Daylight Savings Time.</p> <p>By default, this field is set to the host computer's DST setting.</p> <p> It is recommended that the DST option not be changed after the initial web site configuration. If the DST option must be modified, you will need to reprocess the web site data to maintain accuracy.</p>
<p><b>Guest Login</b> </p>	<p>Select this option if you want to enable Guest Login for this web site.</p> <p>The Guest Login allows any user to log in to the Reporting Interface with simply the domain name of the web site.</p> <p> A guest user does not have access to the Control Panel Interface. The Guest Login only has access to the Reporting Interface—the <b>Admin</b> tab will not be displayed in the Reporting Interface for these users.</p>

3. Click the **Next** button.
4. On Step 2, complete the **Web Site Log Information**. Figure 10 shows an example of the fields when the **Log File Location** option for **Local Drive or UNC Path** is chosen. Figure 11 shows an example when the **Remote FTP Server** option is selected. The fields are explained in the tables below the images.

**LiveSTATS.XSP** SCALABLE LOG ANALYSIS

Global Administration > Web Site Groups > Web Sites for XYZ Corporation Web Sites > **Adding New Web Site**

 **Step 2. Web Site Log Information.**

This section allows you to edit the log file location information for this web site.

Log File Location:  1

Path(s) To Logs:  2


Log Mask:  3

Log Type:  4

Cookie (Optional):  5

Directory Based Web Site (Optional):  6


**Figure 10:** Step 2 of the **Adding New Web Site** wizard for logs on a local drive or UNC path.

Adding New Web Site Step 2: Web Site Log Information for logs on a Local Drive or UNC Path - Figure 10	
<p><b>Log File Location</b> <span style="border: 1px solid #ccc; padding: 2px 5px; color: #f96;">1</span></p>	<p>If the log source is on the same computer as the LiveSTATS.XSP installation or on another computer accessible through a UNC path, select <b>Local Drive or UNC Path</b> from the drop-down list.</p> <p> Refer to Figure 11 for information on the <b>Remote FTP Server</b> option for the Log File Location.</p>

<p><b>Path(s) to Logs</b> <span style="border: 1px solid orange; padding: 0 2px;">2</span></p>	<p>Type the path to the web site's log file folder.</p> <p>This field can be a local path if LiveSTATS.XSP and the log source are located on the same computer.</p> <p>If the log source is on another computer, you must specify the path using the Universal Naming Convention (UNC) format.</p> <p>e.g. \\webserver\xyz\logs\</p> <p>If there is more than one folder, enter each path on a separate line.</p>
<p><b>Log Mask</b> <span style="border: 1px solid orange; padding: 0 2px;">3</span></p>	<p>Type a directory mask to determine which log files in the directory will be imported.</p> <p>If your web server also saves error logs to the specified directory, you can create a filter here to ensure that LiveSTATS.XSP only reads activity log files and not error logs.</p> <p>For example, if you define "ex*.log" as the Directory mask, LiveSTATS.XSP will only read log files that start with "ex" and have a ".log" extension.</p>
<p><b>Log Type</b> <span style="border: 1px solid orange; padding: 0 2px;">4</span></p>	<p>Select the template corresponding to the format of your log files.</p> <p>e.g. W3C Extended (Date: YY MM DD)</p> <p>See the documentation on <b>Log Formats</b> supported by LiveSTATS.XSP for more information.</p>
<p><b>Cookie</b> <span style="border: 1px solid orange; padding: 0 2px;">5</span></p>	<p>If you want LiveSTATS.XSP to track visitors by the cookie that is recorded in the web server log files, type the first half of the Cookie ID (up to the equals (=) sign) as it is recorded in the log files.</p> <p>For example, if the web server log file contains "CFID=30198284&amp;CFTOKEN=830465db31ae91ae-118667CF-2A5F-BD8D-51AB3102712884F8," you would type "CFTOKEN" in this text box. LiveSTATS.XSP ignores all other cookies.</p> <p>This field is optional.</p>
<p><b>Directory Based Web Site</b> <span style="border: 1px solid orange; padding: 0 2px;">6</span></p>	<p>If your web server is configured to record activity for multiple web sites in the same web server activity log file, type the specific directory of the web site in this text box and LiveSTATS.XSP will process the log entries unique to the site.</p> <p>This field is optional.</p>

**LiveSTATS.XSP** SCALABLE LOG ANALYSIS

Global Administration > Web Site Groups > Web Sites for XYZ Corporation Web Sites > **Adding New Web Site**

 **Step 2. Web Site Log Information.**

This section allows you to edit the log file location information for this web site.

Log File Location:  **1**

FTP Server Host:  **2**

FTP Server Port:  **3**

User Name:  **4**

Password:  **5**

Path to Logs:  **6**

Log Download Interval:  **7**


Log Mask:  **8**

Log Type:  **9**



Cookie (Optional):  **10**

Directory Based Web Site (Optional):  **11**

**Figure 11:** Step 2 of the **Adding New Web Site** wizard for logs at an FTP location.

Adding New Web Site Step 2: Web Site Log Information for logs at a FTP Location - Figure 11	
<p><b>Log File Location</b> <b>1</b></p>	<p>If the log source is on a remote web server that you access using FTP (File Transfer Protocol), select the <b>Remote FTP Server</b> option.</p> <p> Refer to Figure 10 for information on the <b>Local Drive</b> or <b>UNC Path</b> option for the Log File Location.</p>

<p><b>FTP Server Host</b> <span style="border: 1px solid orange; padding: 0 2px;">2</span></p>	<p>The web address of the remote FTP server that is the log source.</p> <p>The address may be in the format of a domain name (e.g. ftp.companyxyz.com) or an IP address (e.g. 10.0.0.1).</p>
<p><b>FTP Server Port</b> <span style="border: 1px solid orange; padding: 0 2px;">3</span></p>	<p>The port number on which the remote FTP server is listening.</p>
<p><b>User Name</b> <span style="border: 1px solid orange; padding: 0 2px;">4</span></p>	<p>The account name to use to log on to the remote FTP server.</p>
<p><b>Password</b> <span style="border: 1px solid orange; padding: 0 2px;">5</span></p>	<p>The password assigned to the User Name for the remote FTP server account.</p>
<p><b>Path to Logs</b> <span style="border: 1px solid orange; padding: 0 2px;">6</span></p>	<p>The directory path to the log files on the remote FTP server.</p> <p>For example, /xyz/logs/.</p>
<p><b>Log Download Interval</b> <span style="border: 1px solid orange; padding: 0 2px;">7</span></p>	<p>The interval at which you want LiveSTATS.XSP to download the latest logs from the FTP server.</p>
<p><b>Log Mask</b> <span style="border: 1px solid orange; padding: 0 2px;">8</span></p>	<p>Type a directory mask to determine which log files in the directory will be imported.</p> <p>If your web server also saves error logs to the specified directory, you can create a filter here to ensure that LiveSTATS.XSP only reads activity log files and not error logs.</p> <p>For example, if you define "ex*.log" as the Directory mask, LiveSTATS.XSP will only read log files that start with "ex" and have a ".log" extension.</p>
<p><b>Log Type</b> <span style="border: 1px solid orange; padding: 0 2px;">9</span></p>	<p>Select the template corresponding to the format of your log files.</p> <p>e.g. W3C Extended (Date: YY MM DD)</p> <p>See the documentation on <b>Log Formats</b> supported by LiveSTATS.XSP for more information.</p>

<p><b>Cookie</b> </p>	<p>If you want LiveSTATS.XSP to track visitors by the cookie that is recorded in the web server log files, type the first half of the Cookie ID (up to the equals (=) sign) as it is recorded in the log files.</p> <p>For example, if the web server log file contains "CFID=30198284&amp;CFTOKEN=830465db31ae91ae-118667CF-2A5F-BD8D-51AB3102712884F8," you would type "CFTOKEN" in this text box. LiveSTATS.XSP ignores all other cookies.</p> <p>This field is optional.</p>
<p><b>Directory Based Web Site</b> </p>	<p>If your web server is configured to record activity for multiple web sites in the same web server activity log file, type the specific directory of the web site in this text box and LiveSTATS.XSP will process the log entries unique to the site.</p> <p>This field is optional.</p>



If you have selected to use log files on a remote FTP server, LiveSTATS.XSP requires a local or UNC path to download the FTP files. The default location of this path is **C:\Program Files\DEEPMETRIX\Downloaded Logs\**, but you can specify a different path using the FTP tab of the Configuration Utility. Please see the **Configuration Utility Guide** for more information. Please note that only one log storage path is used per LiveSTATS.XSP installation, so ensure that the path specified contains sufficient space to store all log files for all web sites configured to use this method of accessing the log files.



LiveSTATS.XSP will not compress or delete the logs downloaded from the FTP location after they have been read by LiveSTATS.XSP—this is the responsibility of the LiveSTATS.XSP Administrator. Please note that not maintaining the storage path to ensure that the drive does not run out of space may result in serious repercussions on production servers that run critical applications.

5. Click the **Next** button.
6. Complete Step 3 (Figure 12) to configure the default user account for this web site. The fields are explained in the table below.

**LiveSTATS.XSP** SCALABLE LOG ANALYSIS

Global Administration > Web Site Groups > Web Sites for XYZ Corporation Web Sites > **Adding New Web Site**

### Step 3. Default User Information.

This section allows you to create a default user account for this web site.

User Name:  1

Password:  2

Confirm Password:  3

Email Address:  4

5  Email an Executive Summary Weekly

6  Email an Executive Summary Monthly

7  Send Invitation

**Figure 12:** Step 3 of the **Adding New Web Site** wizard.

Adding New Web Site Step 3: Default User Information - Figure 12	
<b>User Name</b> <span style="background-color: #f4a460; padding: 2px 5px; font-weight: bold;">1</span>	<p>The default User Name for this account is <b>Reports</b>.</p> <p>If you want to assign a different User Name for the default account, clear the text box and type the name.</p> <p>By default, this account has permissions to access the Control Panel for this web site and does not have Java-enabled. You can modify the settings for this account later through <b>User Accounts</b> in the Control Panel.</p>
<b>Password</b> <span style="background-color: #f4a460; padding: 2px 5px; font-weight: bold;">2</span>	<p>LiveSTATS.XSP will automatically create a password for the Default User Account.</p> <p>If you want to assign a different Password for this account, clear the text box and type the password.</p>

<p><b>Confirm Password</b> <span style="background-color: #f4a460; padding: 2px;">3</span></p>	<p>LiveSTATS.XSP will automatically create a password for the Default User Account.</p> <p>If you assign a different Password, re-enter the password to confirm it.</p>
<p><b>Email Address</b> <span style="background-color: #f4a460; padding: 2px;">4</span></p>	<p>Type the email address for this account.</p> <p>The Default User Account's login information (the LiveSTATS.XSP web interface address, the Domain, User Name, and Password) will be sent to this email address if you select the <b>Send Invitation</b> option.</p> <p>This email address will also be used to send the Default User Account weekly and monthly Summary reports if these options are selected.</p>
<p><b>Executive Summary Weekly</b> <span style="background-color: #f4a460; padding: 2px;">5</span></p>	<p>Select this check box to have LiveSTATS.XSP send a weekly Executive Summary to the email address in the <b>Email Address</b> box.</p>
<p><b>Executive Summary Monthly</b> <span style="background-color: #f4a460; padding: 2px;">6</span></p>	<p>Select this check box to have LiveSTATS.XSP send a monthly Executive Summary to the email address in the <b>Email Address</b> box.</p>
<p><b>Send Invitation</b> <span style="background-color: #f4a460; padding: 2px;">7</span></p>	<p>Select this check box to email the Default User Account's login information (the LiveSTATS.XSP web interface address, the Domain, User Name, and Password) to the email address in the <b>Email Address</b> box.</p>

- Click the **Save** button. The new web site will now be listed on the Web Sites page (Figure 13).

LiveSTATS.XSP SCALABLE LOG ANALYSIS

Administration > Web Site Groups > **Web Sites for XYZ Corporation Web Sites** + Add New Web Site

### Web Site Administration

Web Sites 1 to 7 of 7 Filter

#	Web Site					
1.	<input type="checkbox"/> www.abcsoftware.com	Settings	Delete	Control Panel	Status	Reports
2.	<input type="checkbox"/> www.bcdfinancial.ca	Settings	Delete	Control Panel	Status	Reports
3.	<input type="checkbox"/> www.efgware.ca	Settings	Delete	Control Panel	Status	Reports
4.	<input type="checkbox"/> www.defconstruction.com	Settings	Delete	Control Panel	Status	Reports
5.	<input type="checkbox"/> www.xyzcompany.com	Settings	Delete	Control Panel	Status	Reports
6.	<input type="checkbox"/> www.hijco.com	Settings <b>1</b>	Delete	Control Panel <b>2</b>	Status <b>3</b>	Reports <b>4</b>
7.	<input type="checkbox"/> www.crazyslippers.com	Settings	Delete	Control Panel	Status	Reports

**Select All** Manage Selected Web Sites

**Figure 13:** The **Web Sites** page.

If you need to edit the web site configuration, click **Settings** to the right of the web site name (**1** in Figure 13).



For complete documentation on the Global Administration interface, please see the **Global Administration Guide** (also available in PDF).

## Accessing the Control Panel Interface

To access the Control Panel for the new web site, click **Control Panel** to the right of the web site name on the Web Sites page (**2** in Figure 13).

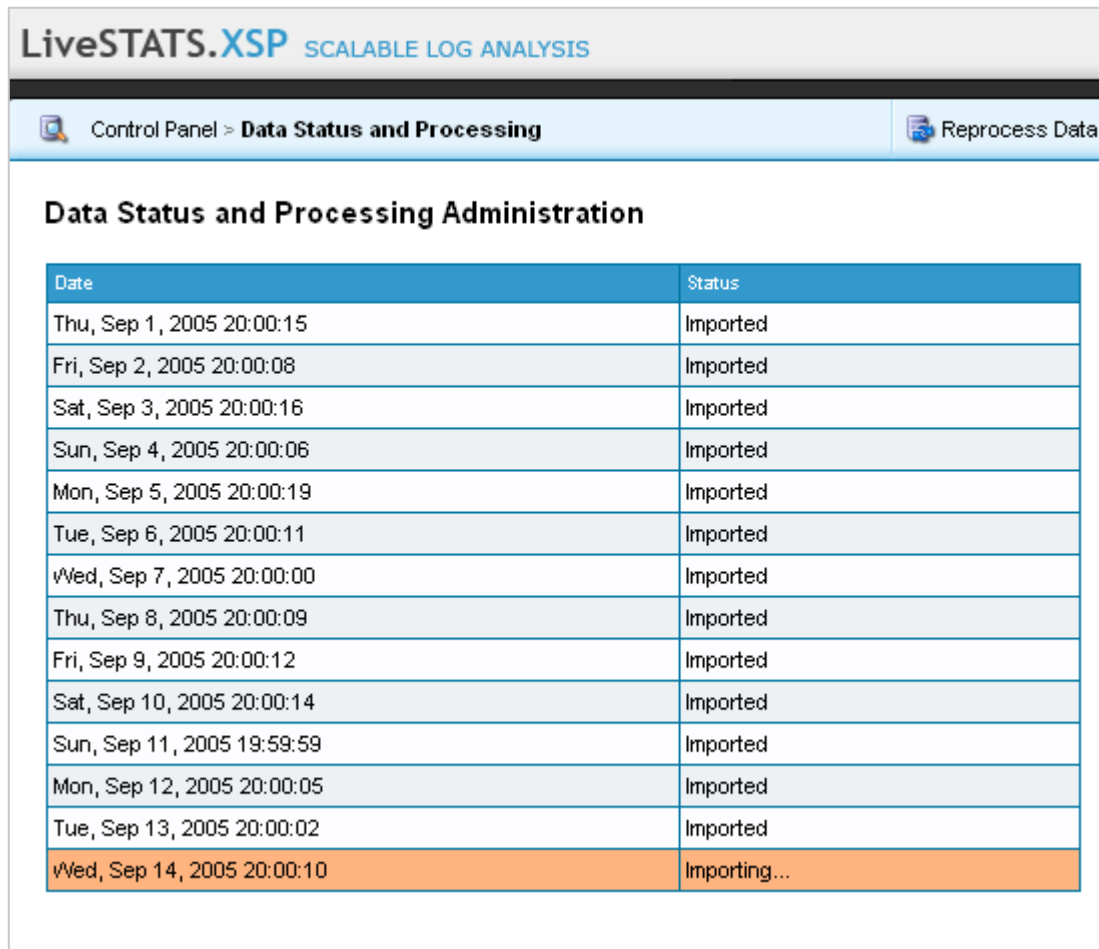
The Control Panel Options page will open and display the web site name (**1** in Figure 2).

## Verifying that LiveSTATS.XSP is Processing Statistics

On the Control Panel Options page, click **Data Status and Reprocessing** (2 in Figure 2) to open the Data Status and Processing page (Figure 14). This page allows you to see if the statistics for a web site are being processed. When the data is being processed for the new web site, the message "Importing..." will be displayed under the Status column beside the current date.



You could also click the **Status** option on the Web Sites page in the Global Administration Interface (3 in Figure 13) to access this page.



Date	Status
Thu, Sep 1, 2005 20:00:15	Imported
Fri, Sep 2, 2005 20:00:08	Imported
Sat, Sep 3, 2005 20:00:16	Imported
Sun, Sep 4, 2005 20:00:06	Imported
Mon, Sep 5, 2005 20:00:19	Imported
Tue, Sep 6, 2005 20:00:11	Imported
Wed, Sep 7, 2005 20:00:00	Imported
Thu, Sep 8, 2005 20:00:09	Imported
Fri, Sep 9, 2005 20:00:12	Imported
Sat, Sep 10, 2005 20:00:14	Imported
Sun, Sep 11, 2005 19:59:59	Imported
Mon, Sep 12, 2005 20:00:05	Imported
Tue, Sep 13, 2005 20:00:02	Imported
Wed, Sep 14, 2005 20:00:10	Importing...

Figure 14: The **Data Status and Processing** page.

## Adding a New User Account

Click **User Accounts** on the Control Panel Options page (**3** in Figure 2).

The **Accounts** page (Figure 15) will list all configured user accounts for the web site. This option lets you create user accounts and control who has access to the reports and the Control Panel for this web site.

When you configured the web site through the Global Administration Interface, you created a **Default User Account**. By default, this account has permissions to access the Control Panel for this web site and does not have Java-enabled. If necessary, you can edit the configuration of this default account through the Accounts settings as well as create additional user accounts for this web site. To modify the default account, click **Edit** to the right of the account name (**1** in Figure 15).



If you selected to allow Guest Logins for this web site, the Guest account will also be listed (**2** in Figure 15).

#	Account Name	Edit	Delete	Send Invitation
1.	Reports	Edit <b>1</b>	Delete	Send Invitation
2.	Guest <b>2</b>	Edit	Delete	

**Figure 15:** The **Accounts** page of the Control Panel.

### Creating a New User Account

Unless the web site has been configured to allow Guest Logins, all users must have an account to log into the LiveSTATS.XSP Reporting Interface.

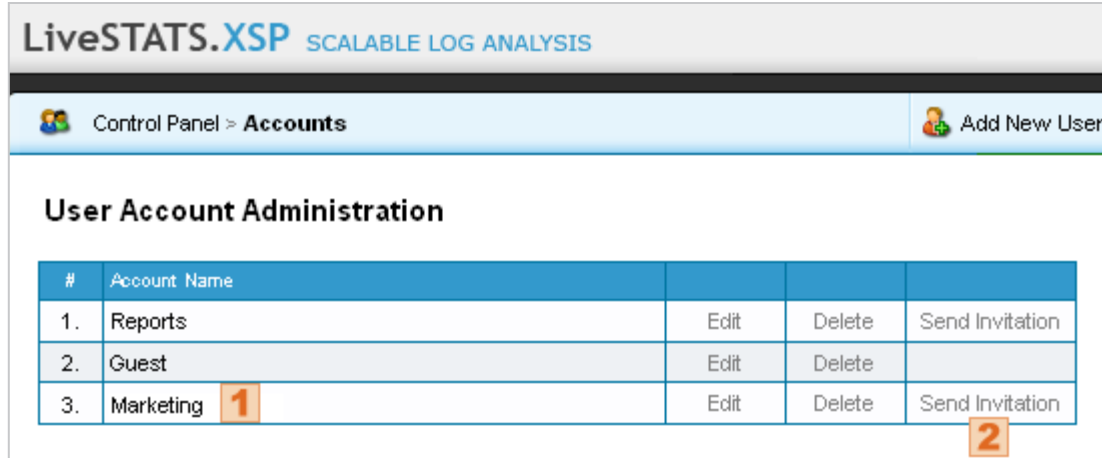
1. Click **Add New User** (**3** in Figure 15) on the Accounts page.
2. Complete the information for the new user on the **Adding New Account** dialog (Figure 16). The fields are explained in the table below.

**Figure 16:** The **Adding New Account** dialog.

Adding New Account Dialog Fields (Figure 16)	
<b>User Name</b> 1	Type a name for the user account. Users must provide a user name and password to log in to the LiveSTATS.XSP Reporting interface unless the web site is configured to allow Guest Logins.
<b>Password</b> 2	Type a password for the user account. Users must provide a user name and password to log in to the LiveSTATS.XSP Reporting interface unless the web site is configured to allow guest logins.

<b>Confirm Password</b> <b>3</b>	Re-enter the password to confirm it.
<b>Email Address</b> <b>4</b>	Type the email address for this account.  If you enable summaries under <b>Email Reports</b> , LiveSTATS.XSP sends email reports to this address.
<b>Account has Access to Web Site Settings</b> <b>5</b>	Select this check box to allow the user to access the Control Panel Interface and manage this web site.  Clear the check box to deny the user access to the Control Panel. If the user does not have this permission, the <b>Admin</b> tab will not be displayed to them in the Reporting Interface.
<b>Account is Disabled</b> <b>6</b>	Select this check box to disable the account.  When an account is disabled, the user cannot log in to LiveSTATS.XSP and will not receive summary reports.  You may want to disable an account if a user is on vacation. Clear this check box to enable the account.
<b>Enable Java</b> <b>7</b>	Select this check box to enable Java-based graphs in the Reporting Interface for this user.  Please note that this option will require that the user have a JVM (Java Virtual Machine) installed on their computer. The JVM is required to interpret the Java-based graphs. A JVM can be downloaded from: <a href="http://java.com">http://java.com</a> .
<b>Email Weekly Summary</b> <b>8</b>	Select this check box to have LiveSTATS.XSP send a weekly Executive Summary to the email address in the <b>Email Address</b> box.
<b>Email Monthly Summary</b> <b>9</b>	Select this check box to have LiveSTATS.XSP send a monthly Executive Summary to the email address in the <b>Email Address</b> box.
<b>Format</b> <b>10</b>	Select the format of the emailed reports from the drop-down list: HTML or PDF.

3. Click the **Save** button. The new account will now be listed on the **Accounts** page (**1** in Figure 17).
4. If you want to send the new user account the login information (the LiveSTATS.XSP web interface address, the Domain, User Name, and Password) to the configured email address, click **Send Invitation** to the right of the user name (**2** in Figure 17).



**Figure 17:** The **Accounts** page.

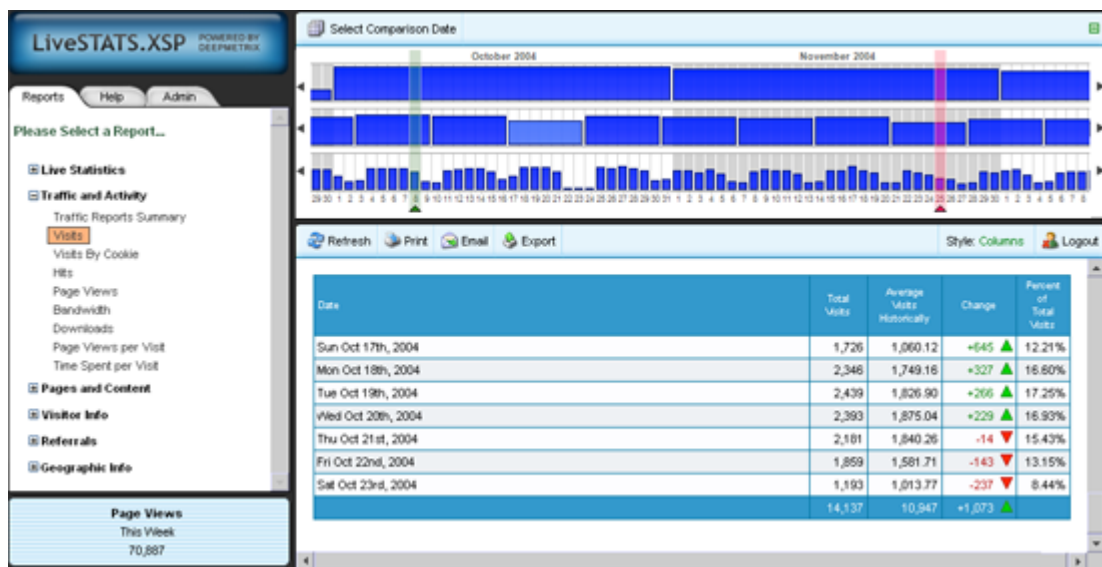


For complete documentation on the Control Panel interface, please see the **Control Panel Guide** (also available in PDF).

## Accessing the Reporting Interface

To access the Reporting Interface for a web site, click the **Reports** button at the top of the Control Panel (**4** in Figure 2).

The LiveSTATS.XSP Reporting interface for the web site opens (Figure 18).

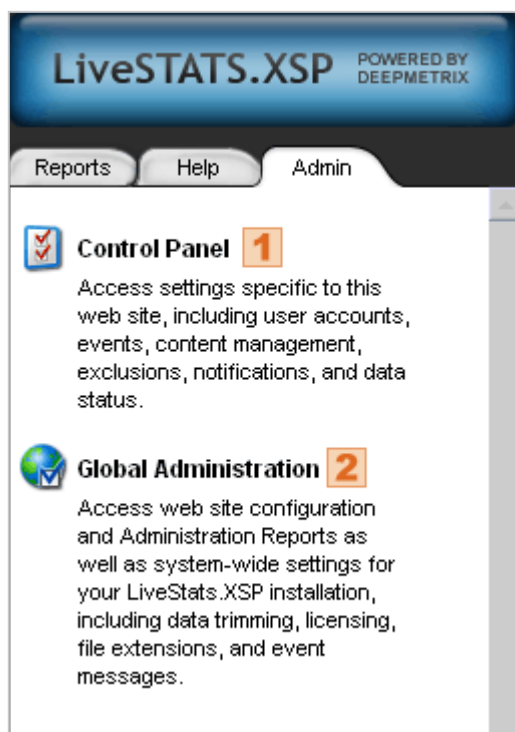


**Figure 18:** The Reporting Interface for a web site.



You can also access the Reporting Interface from the Global Administration Interface. Click **Reports** to the right of the web site name on the Web Sites page (4 in Figure 13).

To return to the Control Panel Interface, simply select the **Admin** tab and click **Control Panel** (1 in Figure 19). To return to the Global Administration Interface, click **Global Administration** (2 in Figure 19).



**Figure 19:** The **Admin** tab in the Reporting Interface.

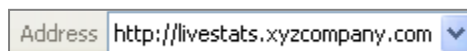


If a user account has not been assigned access to a web site's settings, the **Admin** tab will not appear in the Reporting Interface for that account. The Global Administration option will only be displayed on the Admin tab if the user has logged in with the LiveSTATS.XSP Master Account.

### Accessing the Reporting Interface with a User Account

To access the Reporting Interface from a remote location, the user must know the address of the LiveSTATS.XSP web interface.

1. Open a web browser on the remote computer. In the Address box, type the address of the LiveSTATS.XSP web interface (Figure 20) and press **Enter**.



**Figure 20:** Launching the Reporting Interface Login dialog from a remote computer.

To type the address of the LiveSTATS.XSP web interface, use one of the following formats:

Address	Example
http://<domain>	http://livestats.xyzcompany.com/livestats
http://<IPAddress>	http://10.10.10.2/livestats
If you are on a Local Area Network (LAN):	
http://<hostcomputername>	http://XYZCOMPANY/livestats



If you selected to have LiveSTATS.XSP as the root folder for this web site, the address will not include the "livestats" directory. For example, the address will simply be http://livestats.xyzcompany.com rather than http://livestats.xyzcompany.com/livestats.

- The login dialog will open (Figure 21). The login fields are explained in the table below.

**Figure 21:** The LiveSTATS.XSP Reporting Interface Login dialog.

Reporting Interface Login Dialog Fields (Figure 21)	
<b>Server Domain</b> <span style="background-color: #f4a460; padding: 2px;">1</span>	Type the domain of the web site for which you want to see statistic reports.  e.g. www.crazyslippers.com
<b>User Name</b> <span style="background-color: #f4a460; padding: 2px;">2</span>	Type the name of a User Account for this web site.  Please note that the User Name is case-sensitive.

Password <b>3</b>	Type the password assigned to the User Account. Please note that the Password is case-sensitive.
-------------------	---

3. Click the **Login** button.

If the user has permissions to manage the web site, the **Admin** tab will be accessible to them with the **Control Panel** link displayed (**1** in Figure 19). They can click this link to access the Control Panel where they can create events, filters, additional accounts, etc. for this web site.



For complete documentation on the Reporting Interface, please see the **Reporting Interface Guide**.

## What's Next?

---

At this point, you should be able to view statistics for the web site you configured. By repeating the steps in this section, you can track additional web sites, create user accounts, and view statistics for these web sites.

- If you want to administer your configuration of LiveSTATS.XSP, like manage web sites, file extensions, data management, access administration reports, and view event messages, see the **Global Administration Guide** (also available in PDF).
- If you want to modify the settings for a web site, like user accounts, dynamic content, custom reports, and client exclusions, see the **Control Panel Guide** (also available in PDF).
- If you want to learn about features in the Reporting Interface that help you get the most out of your web site statistics, see the **Reporting Interface Guide** (also available in PDF).
- The **Getting Started with the LiveSTATS.XSP Reports** guide (also available in PDF) will help you locate core web site statistics.
- The **Getting Started with Custom Reports** guide (also available in PDF) will show you how to set up custom reports to track marketing goals and events.

For the complete LiveSTATS.XSP documentation, please see the Support section of the Customer Care site at <https://www.deepmetrix.com/customer-care>.

## About DeepMetrix

---

DeepMetrix Corporation has developed real-time applications for businesses since 1992. Our applications and services are used by enterprises to make business, IT, marketing and merchandising decisions based on timely factual information.

DeepMetrix pioneered real-time web statistics in 1996 and has remained an industry leader since that time, now with more than seven hundred and thirty-four thousand web-sites actively using LiveSTATS.

For more information contact DeepMetrix at:

DeepMetrix Corporation  
15 Gamelin Blvd., Suite 510  
Gatineau, Quebec, Canada J8Y 1V4  
Phone: 819.776.0707  
Fax: 819.776.5560  
Toll-Free Sales Phone: 1.800.903.8287  
Email: [info@deepmetrix.com](mailto:info@deepmetrix.com)  
Web Site: [www.deepmetrix.com](http://www.deepmetrix.com)

©2005 DEEPMETRIX CORPORATION All rights reserved. DeepMetrix, StatScript, InstantMining, Click-and-Mine, Visitor Intelligence and LiveSTATS are trademarks or registered trademarks of DeepMetrix Corporation in Canada, the United States of America and other countries. The names of actual companies, products and all other trademarks mentioned herein, registered or otherwise, are the property of their respective owners.

**DISCLAIMERS:** The information in this user guide is subject to change without notice. DeepMetrix Corporation assumes no responsibility or liability for any errors or inaccuracies that may appear in this guide.

Example companies, domain names, products, email addresses, people and events depicted within this guide, such as screen captures and product examples, are fictitious or those of DeepMetrix Corporation.

**VERSION:** LiveSTATS.XSP v8 Quick Start Guide v1.1: Release Date: November 8, 2005.